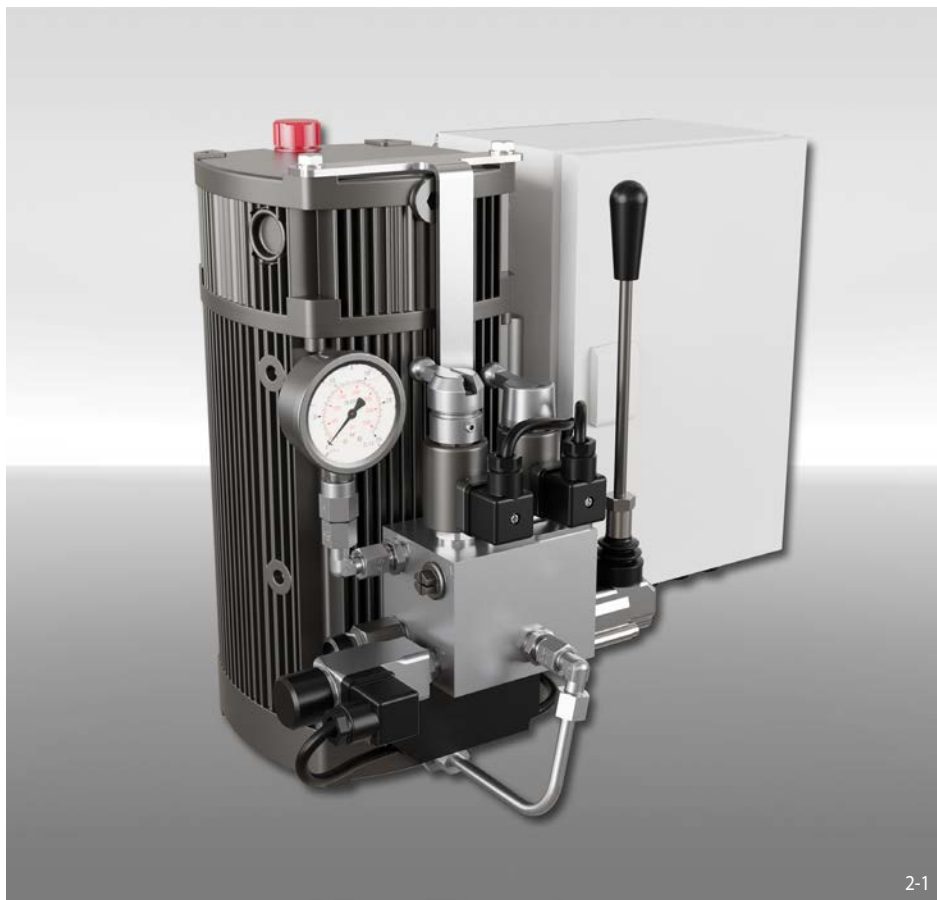


# Hydraulic Power Unit HKA 291

for the operation of hydraulic brakes  
for a wide pressure and temperature range available



## Features

- Compact design
- Optimum heat dissipation thanks to the extruded profile
- With manual hand pump function as standard
- Ambient temperature: -20 °C / +50 °C
- Flexibly expandable
- 2.7 litre oil usable volume as standard
- Electrical level and temperature monitoring and electrical thermal switch (oil temperature)

## Notes

- Fastening:  
4 mounting threads M8 x 15 deep

## Technical Data

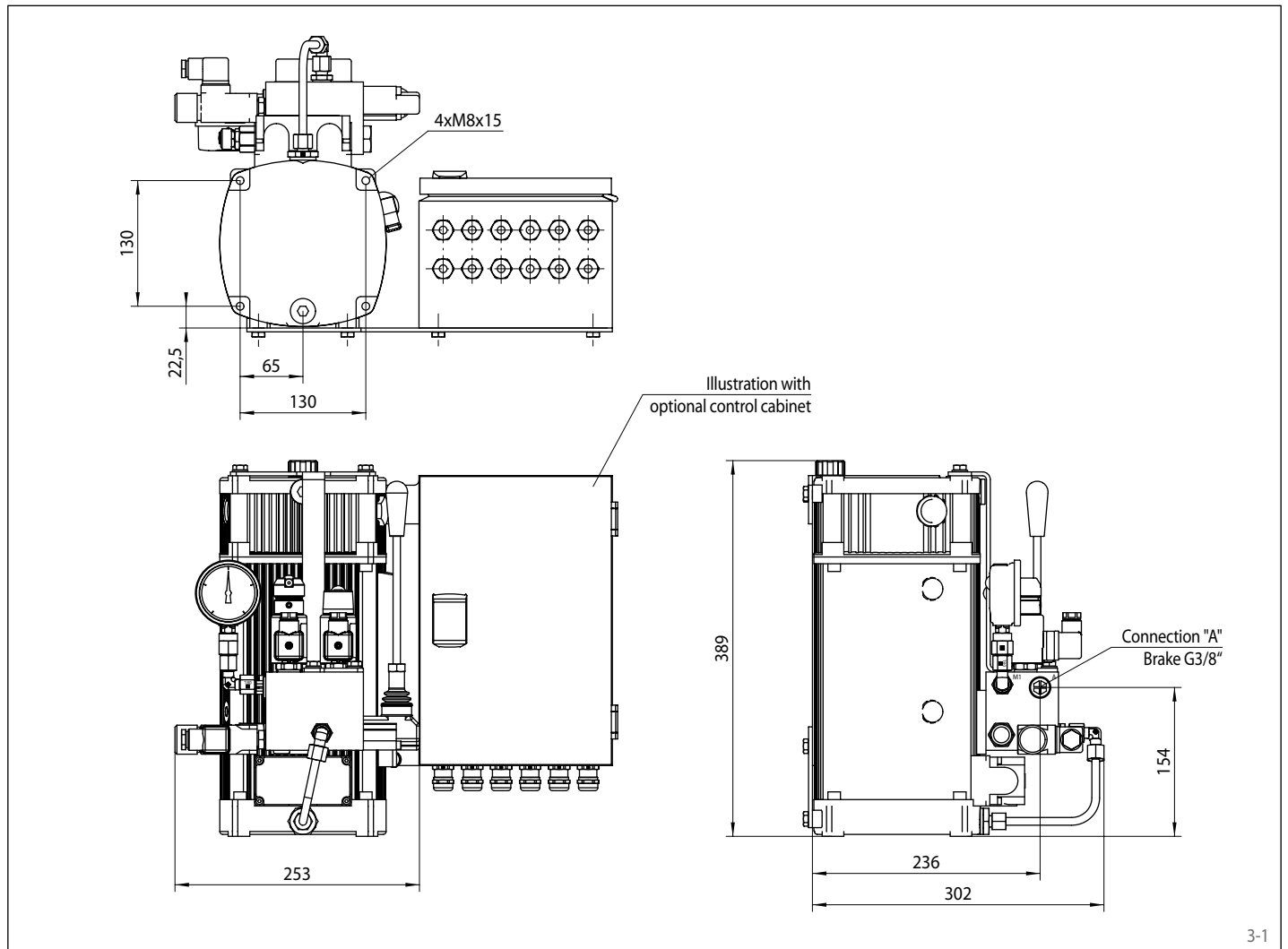
	Hydraulic Power Unit	
	HKA 291 S 150-160 bar	HKA 291 S 230-245 bar
Set pressure	min. 150 bar max. 160 bar	min. 230 bar max. 245 bar
Protection type	IP55	IP55
Motor power	1,6 kW	1,6 kW
Supply voltage	3x400 V at 50Hz 3x460 V at 60Hz	3x400 V at 50Hz 3x460 V at 60Hz
Oil flow rate	4,3 l/min	4,3 l/min
Tank capacity	5 l	5 l
Weight	ca. 25 kg	ca. 25 kg

## Options

- Pressure switch for pressure monitoring
- Additional switching valves for special functions
- Further options can be flange-mounted in modular design, e.g. step braking, soft braking or pressure accumulator
- Control cabinet for controlled operation of the hydraulic unit manually or externally
- Terminal box

# Hydraulic Power Unit HKA 291

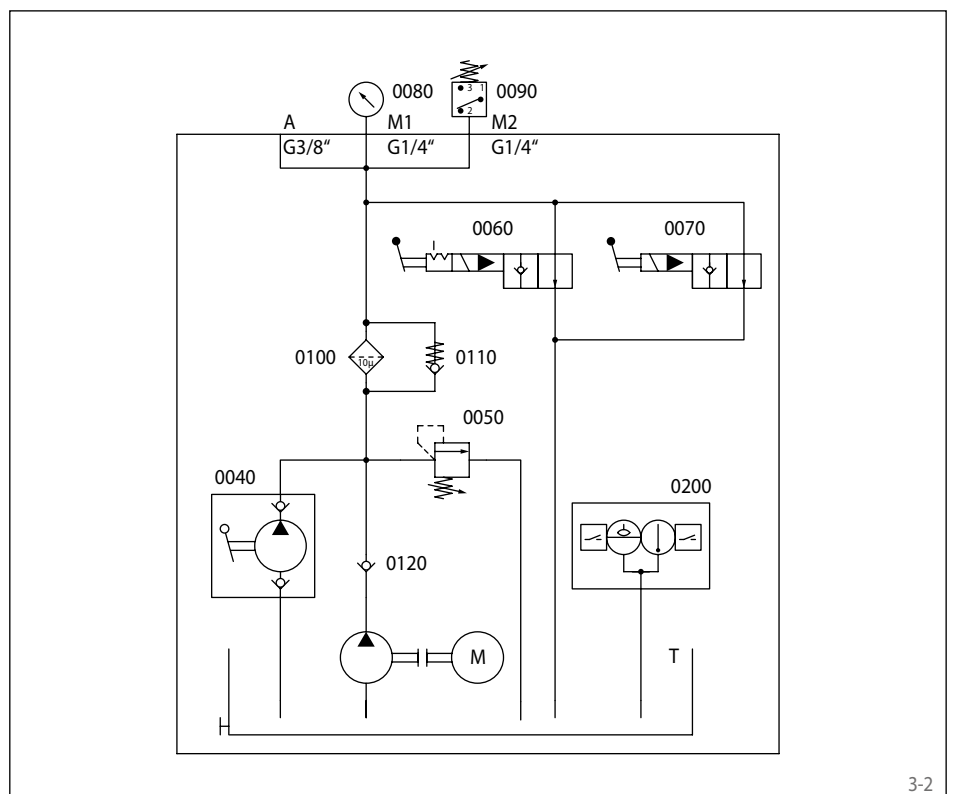
for the operation of hydraulic brakes  
for a wide pressure and temperature range available



3-1

## Hydraulic circuit diagram

- 0040 Hand pump
- 0050 Pressure relief valve
- 0060 Directional seat valve with handlocking
- 0070 Directional seat valve
- 0080 Manometer
- 0090 Pressure switch
- 0100 Filter
- 0110 Check valve
- 0120 Check valve
- 0200 Oil level indicator and thermal switch
- A Hydraulic connection G3/8"



3-2