

Hydraulic Power Unit HCO2R

for the operation of hydraulic brakes
for applications with simple control tasks



Working conditions

- Ambient temperature -20 °C / +40 °C
- Air humidity <90%

Monitoring switch

- The oil pressure builds up when the motor is switched on
- The pressure switch enables the motor to be switched off when the release pressure is reached
- The seat-valve opens, when electric power supply is interrupted. The system pressure will be released.
- With integrated control cabinet

Notes

- Fastening:
4 screws M10 class 8.8 (optional)

Technical Data

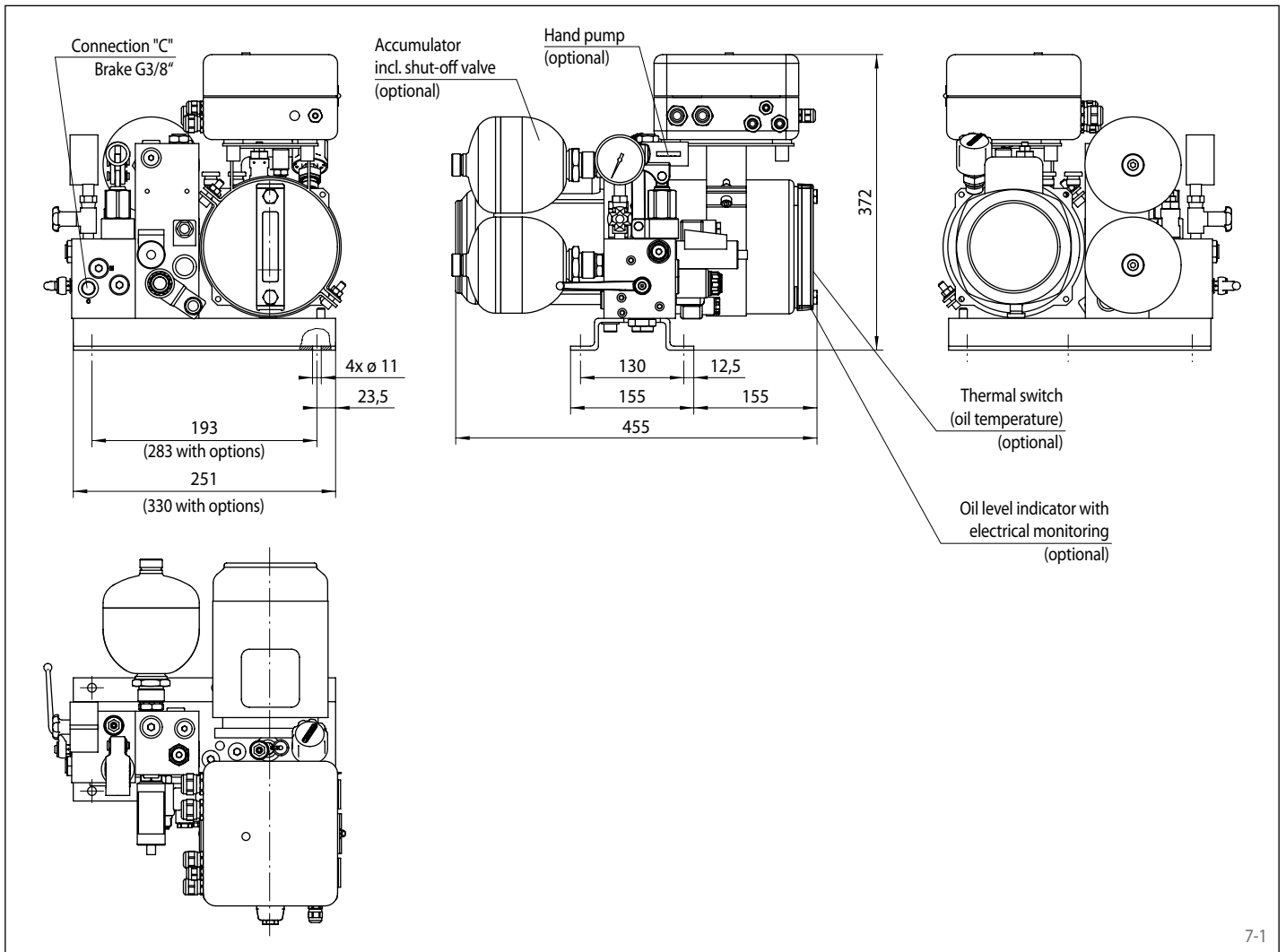
	Hydraulic Power Unit			
	1,3 l/min - 230 bar	2,4 l/min - 120 bar	2,4 l/min - 180 bar	3,7 l/min - 230 bar
Max. pressure	250 bar	140 bar	200 bar	250 bar
Protection type	IP55	IP55	IP55	IP55
Motor power	0,55 kW	0,55 kW	1,5 kW	1,5 kW
Supply voltage	400VAC 50 Hz	400VAC 50 Hz	400VAC 50 Hz	400VAC 50 Hz
Oil flow rate	1,3 l/min	2,4 l/min	2,4 l/min	3,7 l/min
Tank capacity (of which usable volume)	2,5 (2) l	2,5 (2) l	2,5 (2) l	2,5 (2) l
Weight	20 kg	21,3 kg	21,3 kg	22,5 kg

Options

- Check valve redundancy
- Emergency lowering functions
- Special input voltage
- Thermal switch (oil temperature)
- Hand pump block with 3-way valve
- Oil filter block
- 3-way valve
- Controlled oil heater
- Accumulator
- Shut-off valve
- Oil level indicator with electrical monitoring

Hydraulic Power Unit HCO2R

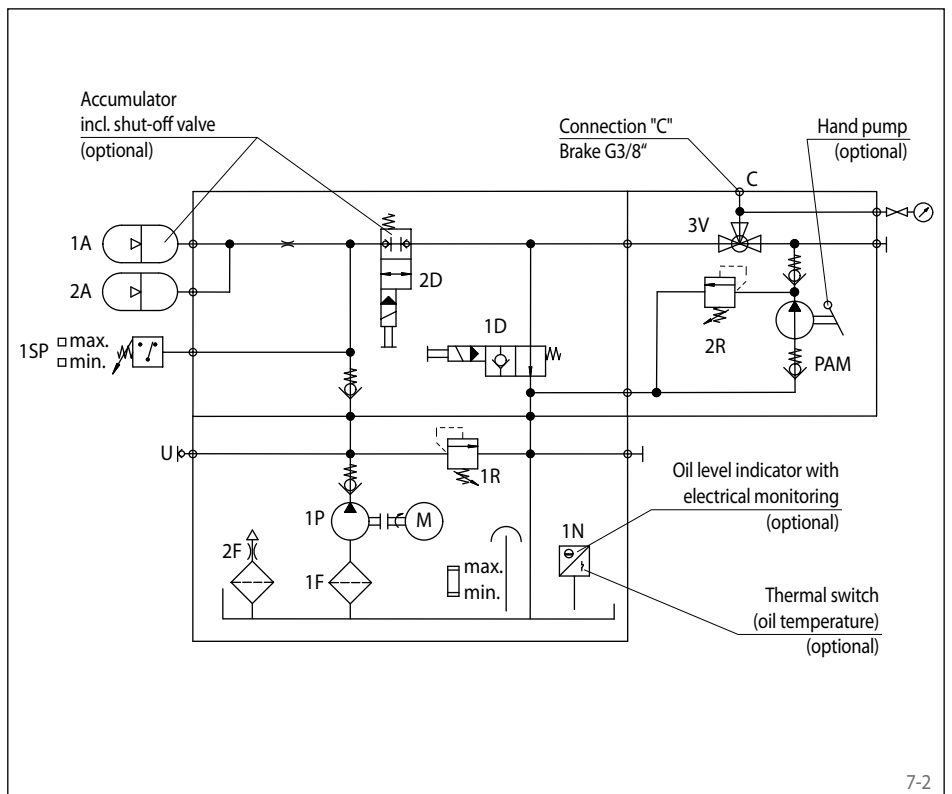
for the operation of hydraulic brakes
for applications with simple control tasks



7-1

Hydraulic circuit diagram

- 1A Accumulator (optional)
- 1D 2/2-way valve
- 1F Suction filter
- 1N Oil level indicator with electrical monitoring (optional)
- 1N Thermal switch (optional)
- 1P Pump
- 1R Pressure relief valve
- 1SP Pressure switch
- 2A Accumulator (optional)
- 2D Shut-off valve (optional)
- 2F Filter
- 2R Pressure relief valve (optional)
- 3V 3-way valve (optional)
- C Hydraulic connection G3/8"
- PAM Hand pump (optional)
- U External connection G1/4"



7-2