

Hydraulic Power Unit H205M

for the operation of hydraulic brakes
for a wide pressure range available



Features

- Compact design
- Very small dimensions because of the cylindrical design of the tank
- Optimised oil-connection of pressure side provided by two connection bores arranged in an angle of 90°
- Inside and outside of the tank is oil-resistant powder painted

Notes

- Fastening:
2 mounting threads M8 x 15 mm deep

Technical Data

	Hydraulic Power Unit							
	H205M 012-015	H205M 074-080	H205M 074-080*	H205M 145-160	H205M 160-175	H205M 180-195	H205M 210-230	H205M 230-235
Set pressure	min. 12 bar max. 15 bar	min. 74 bar max. 80 bar	min. 74 bar max. 80 bar	min. 145 bar max. 160 bar	min. 160 bar max. 175 bar	min. 180 bar max. 195 bar	min. 210 bar max. 230 bar	min. 230 bar max. 235 bar
Protection type	IP55	IP55	IP55	IP55	IP55	IP55	IP55	IP55
Motor power	0,75 kW	0,75 kW	0,75 kW	1,5 kW	1,5 kW	1,5 kW	1,5 kW	1,5 kW
Supply voltage	220-240/380-420V at 50 Hz 254-280/440-480V at 60 Hz	220-240/380-420V at 50 Hz 254-280/440-480V at 60 Hz	220-240/380-420V at 50 Hz 254-280/440-480V at 60 Hz	220-240/380-420V at 50 Hz 254-280/440-480V at 60 Hz	220-240/380-420V at 50 Hz 254-280/440-480V at 60 Hz	220-240/380-420V at 50 Hz 254-280/440-480V at 60 Hz	220-240/380-420V at 50 Hz 254-280/440-480V at 60 Hz	220-240/380-420V at 50 Hz 254-280/440-480V at 60 Hz
Oil flow rate	4,4 l/min	4,4 l/min	4,4 l/min	4,4 l/min	4,4 l/min	4,4 l/min	3,7 l/min	3,7 l/min
Tank capacity	2 l	2 l	2 l	2 l	2 l	2 l	2 l	4 l
Weight	ca. 16 kg	ca. 16 kg	ca. 16 kg	ca. 16 kg	ca. 16 kg	ca. 16 kg	ca. 16 kg	ca. 20 kg

* with 230 V switching valves

Options

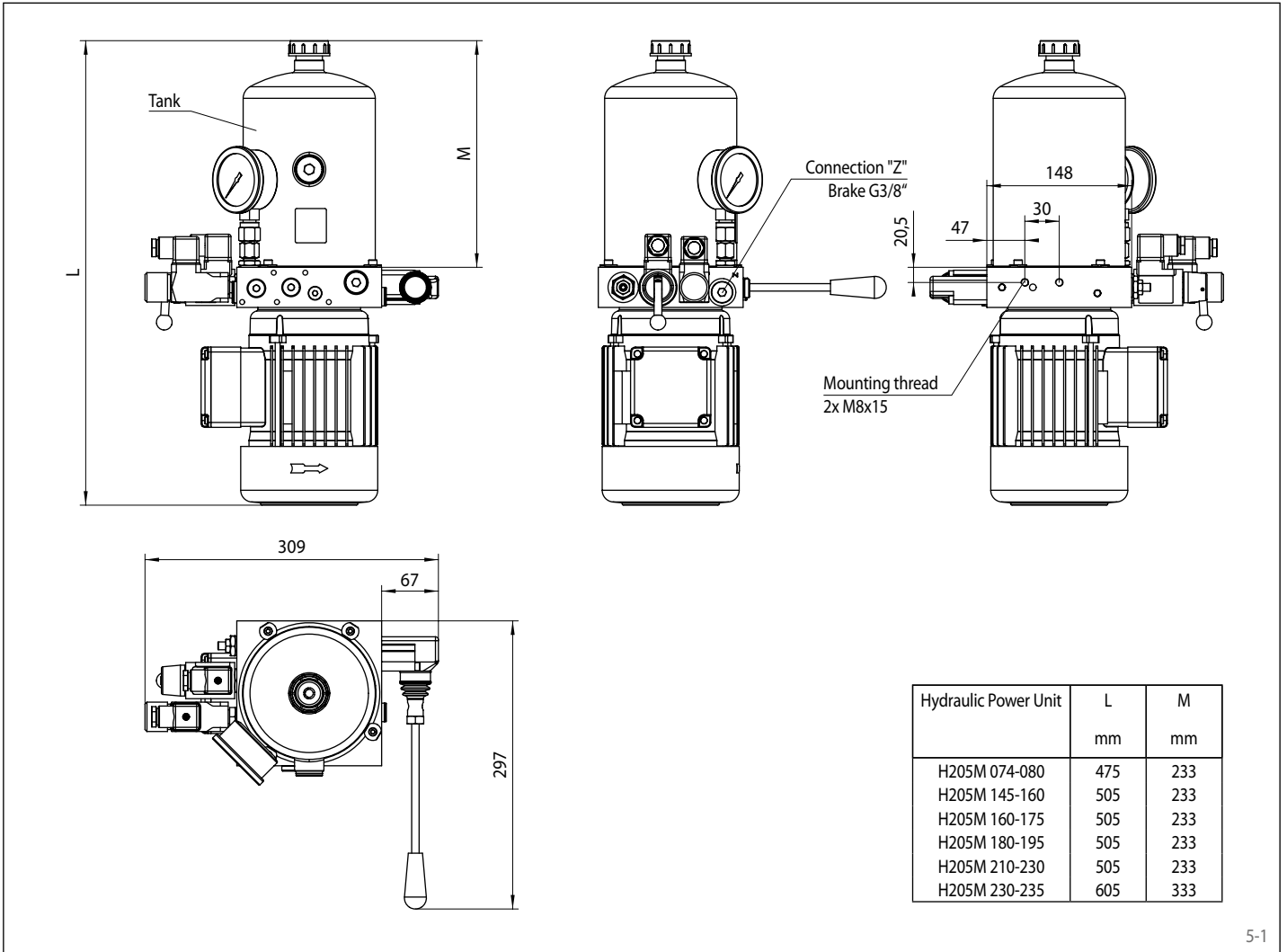
- Pressure switch for pressure monitoring
- Additional switching valves for special functions
- Further options can be flange-mounted in modular design, e.g. step braking, soft braking or pressure accumulator
- Control cabinet for controlled operation of the hydraulic unit manually or externally
- Terminal box



Examples: Modular design with flange-mounted function block and storage tank

Hydraulic Power Unit H205M

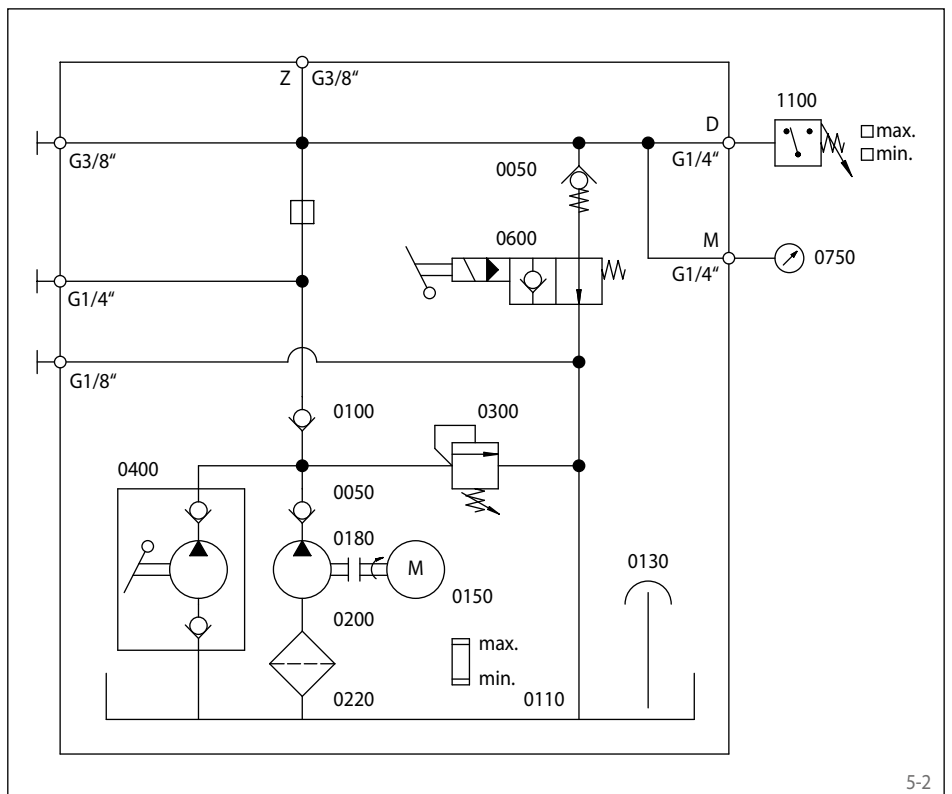
for the operation of hydraulic brakes
for a wide pressure range available



5-1

Hydraulic circuit diagram

- 0050 Check valve
- 0100 Check valve
- 0110 Tank
- 0130 Filling and release screw
- 0150 Electric motor
- 0180 Coupling
- 0200 Pump
- 0220 Suction filter
- 0300 Pressure relief valve
- 0400 Hand pump
- 0600 2/2-way seat valve
- 0750 Manometer
- 1100 Pressure switch
- Z Hydraulic connection G3/8"



5-2